

ctys-uc-X11(7) Use-Cases for X11

November 28, 2010

Contents

1	Xterm with Interactive bash	2
2	Gnome-Terminal with Interactive bash	2
3	Emacs Session in shell-mode	3
4	Emacs Session with cd	3
5	Single XClock	3
6	SEE ALSO	4
7	AUTHOR	4
8	COPYRIGHT	4

1 Xterm with Interactive bash

This opens a Xterm window with an interactive bash. Various consoles could be used, which are actually X-terminals such as Xterm or gnome-terminal.

Due to the different usage of hyphens for the various graphical user interfaces the suboptions 'SH' and 'DH' - 'single hyphen' and 'double hyphen' were introduced. The "SH" suboption is here mandatory for the usage of Xterm, because the Xterm emulation requires a single-hyphen for its options, default is "DH".

The default behaviour concerning the terminal emulation is to scan for a gnome-terminal first and prefer it if found, else an xterm emulation will be started by default.

```
ctys -t x11 -a create=l:tstx11 lab00
```

The same by call CONSOLE:XTERM alias.

```
ctys -t x11 -a create=l:tstx11,console:xterm lab00
```

The same by call args.

```
ctys -t x11 -a create=l:tstx11,cmd:xterm,sh lab00
```

The same by call args with explicit shell.

```
ctys -t x11 -a create=l:tstx11,cmd:xterm,c:bash\%-i,sh lab00
```

2 Gnome-Terminal with Interactive bash

This opens a Gnome-Terminal window with an interactive bash. The "DH" suboption is here mandatory but the default. This is required because the gnome-terminal emulation requires a double-hyphen for its options. The the default behaviour is to open a gnome-terminal when detected.

```
ctys -t x11 -a create=l:tstx11 lab00
```

The same by call CONSOLE:GTERM alias.

```
ctys -t x11 -a create=l:tstx11,console:gterm lab00
```

The same as the default behaviour.

```
ctys -t x11 -a create=l:tstx11,dh lab00
```

The same as the default behaviour.

```
ctys -t x11 -a create=l:tstx11,cmd:gnome-terminal,c:bash\%-i,dh lab00
```

3 Emacs Session in shell-mode

Starts an remote Emacs in

```
ctys -t x11 -a create=l:tstx11,cmd:emacs\%-f\%shell,s:bash\%-i lab00
```

The same by call CONSOLE:EMACS alias.

```
ctys -t x11 -a create=l:tstx11,console:emacs lab00
```

4 Emacs Session with cd

Starts an remote Emacs:

```
ctys -t x11 -a create=l:tstx1,console:emacs,cd:/var/tmp app1
```

The result is:

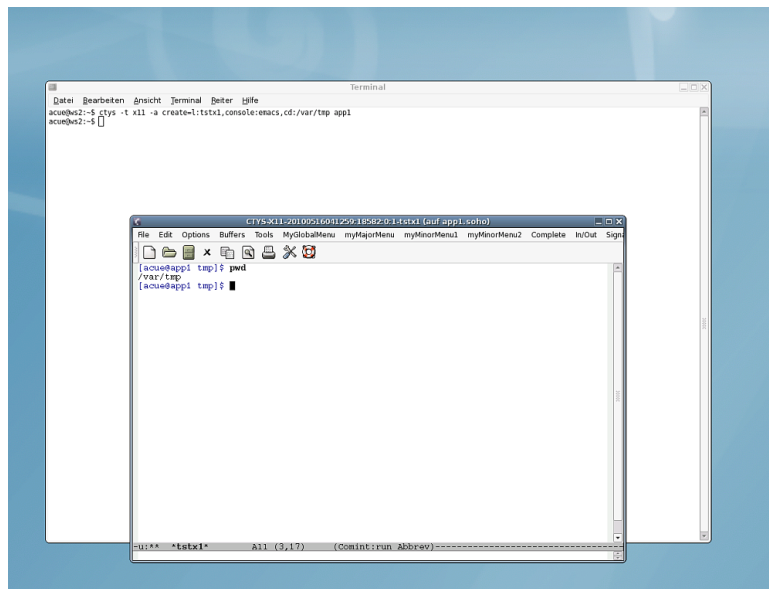


Figure 12: Emacs-Console with 'cd /var/tmp'

5 Single XClock

This starts an Xclock with an altered options keyword for windows title, additionally the "SH" key is required for using single-hyphens.

```
ctys -t x11 -a create=l:tstx11,cmd:xclock,titlekey:name,sh lab00
```

Similar, but not the same. This starts an Xclock with NOTITLE, which suppresses the setting of the title for a window by the LABEL string. Thus this window is no longer recognized by LIST, or just with limits.

```
ctys -t x11 -a create=l:tstx11,cmd:xclock,notitle lab00
```

6 SEE ALSO

ctys(1) , *ctys-plugins(1)* , *bash(1)* , *xterm(1)*

For standards:

Freedesktop: <<http://www.freedesktop.org>>

Xorg: <<http://www.x.org>>

For implementations:

FVWM: <<http://www.fvwm.org>>

Gnome: <<http://www.gnome.org>>

KDE: <<http://www.kde.org>>

XFCE: <<http://www.xfce.org>>

7 AUTHOR

Maintenance: <acue_sf1@sourceforge.net>
Homepage: <<http://www.UnifiedSessionsManager.org>>
Sourceforge.net: <<http://sourceforge.net/projects/ctys>>
Berlios.de: <<http://ctys.berlios.de>>
Commercial: <<http://www.i4p.com>>



8 COPYRIGHT

Copyright (C) 2008, 2009, 2010 Ingenieurbuero Arno-Can Uestuenseoz

This is software and documentation from **BASE** package,

- for software see GPL3 for license conditions,
- for documents see GFDL-1.3 with invariant sections for license conditions.
The whole document - all sections - is/are defined as invariant.

For additional information refer to enclosed Releasenotes and License files.

